

CIP Training

L5160/L5130

2 Throughput

RICOH
imagine. change.

CIP Training L5160/L5130

Throughput

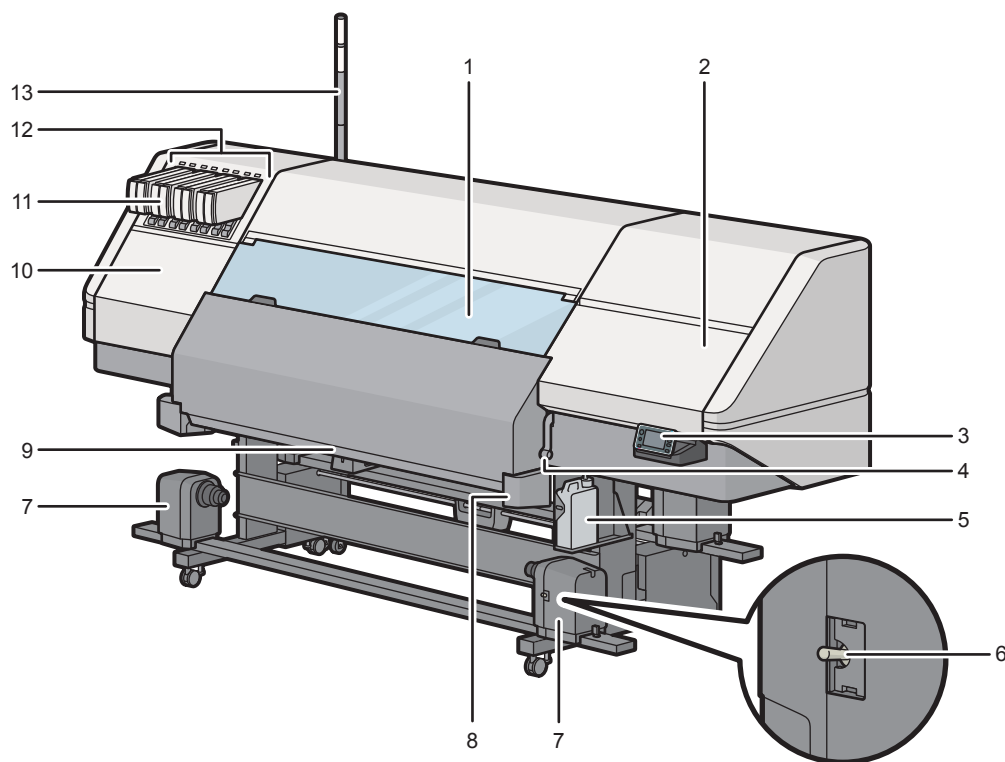
Names and Functions of Components

This section describes the names and functions of the machine's components.

⚠ CAUTION

- Do not obstruct the machine's vents. Doing so risks fire caused by overheated internal components.

Front View



DWT106

- 1. Center cover**
Open this cover when setting media, dealing with media misfeeds, or cleaning the platen.
- 2. Right cover**
Open this cover when doing maintenance work such as cleaning the caps or replacing the cleaning cartridge, etc.
- 3. Control panel**

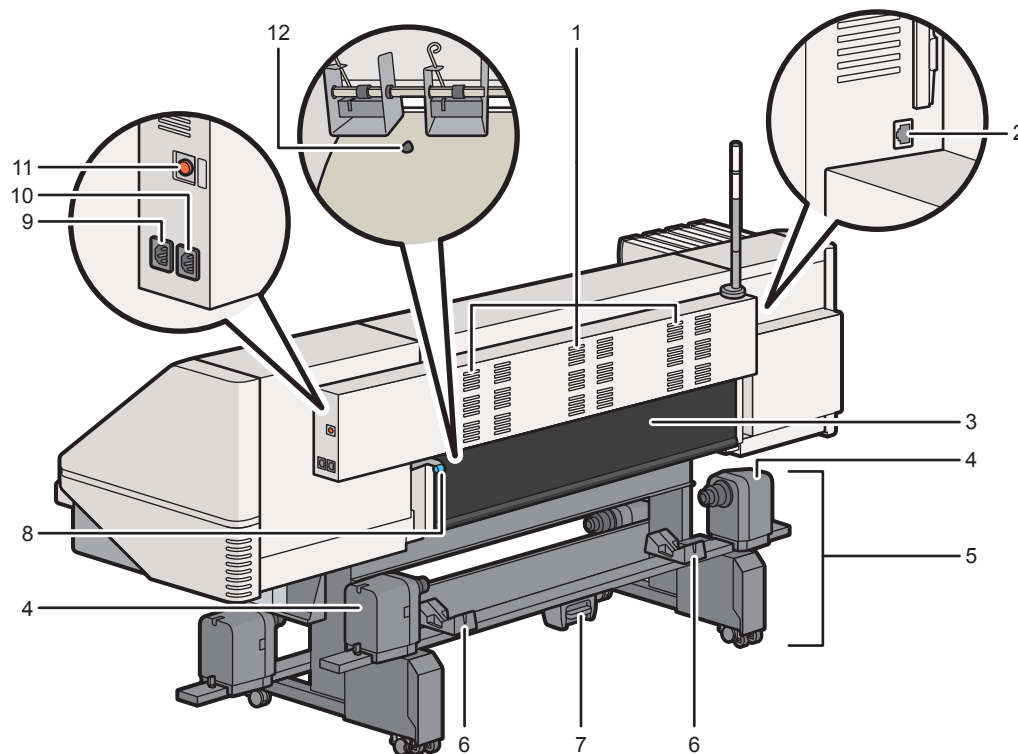
CIP Training L5160/L5130

Throughput

4. **Media holding lever (front)**
A lever to hold media on the feeding surface. Use this lever when setting media or dealing with media misfeeds, etc. The media holding lever (front) and media holding lever (back) work in conjunction with each other.
5. **Waste ink bottle**
Accumulates discharged waste ink from head cleaning, etc. To replace the waste ink bottle.
6. **Roll-up switch**
Changes the rolling direction of the media. When this switch is turned off, the media is not rolled up.
7. **Roll core holder**
Use to set the roll core and roll up printed roll media.
8. **Media cutter**
Cuts media.
9. **Media output location**
Outputs printed media.
10. **Left cover**
Open this cover when cleaning the underside of the carriage for the nozzle surface of the print heads, media sensor, etc.
11. **Ink cartridge**
Set the ink cartridges of each color correctly.
12. **Ink indicator**
Stays lit when the ink cartridges are not set correctly or unlocked. Also, the LED stays lit to notify when an ink cartridge is empty.
13. **Attention light (option)**
Notifies of errors during printing such as media misfeeds or media replacement by lighting or flashing.

Throughput

Rear/Side View.



DWT107

- 1. Vents**
Prevents overheating.
- 2. Ethernet port**
Port for connecting an Ethernet interface cable.
- 3. Pre-heater cover**
Open this cover when setting media or cleaning the pre-heater. There are media input locations and a media sensor inside of this cover.
- 4. Roll holder**
Use to set roll media.
- 5. Roll feed unit**
Pull out when setting or replacing media.
- 6. Media support**
Use to place media temporarily when setting heavy media.
- 7. Handle**
Use when pulling out the roll feed unit.

CIP Training L5160/L5130

Throughput

8. Media holding lever (back)

A lever to hold media on the feeding surface. Use this lever when setting media, dealing with media misfeeds, etc. The media holding lever (front) and media holding lever (back) work in conjunction with each other.

9. Power inlet 1

A power inlet for supplying power to the pre-heater and cure heater. Connect the included power cord to the power socket.

10. Power inlet 2

A power inlet for supplying power to the machine. Connect the included power cord to the power socket.

11. Main power switch

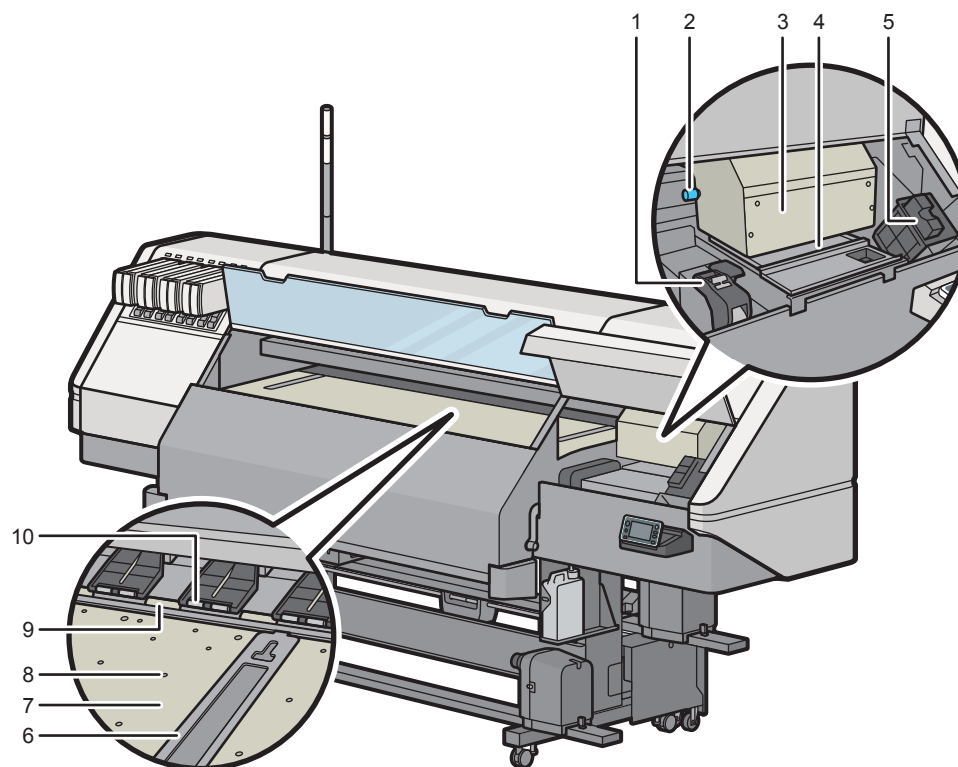
To operate the machine, the main power switch must be on. If it is off, turn the switch on.

"Turning On the Power".

12. Media sensor

Detects the presence of media.

Inside View



CIP Training L5160/L5130

Throughput

1. Cleaning cartridge

A maintenance cartridge that is made up of a wiper and flushing pad. Use this cartridge when performing head cleaning. To replace the cleaning cartridge, see "Replacing a Cleaning Cartridge".

2. Head height adjustment knob

When the machine cannot be operated due to a media misfeed etc., raise the print heads by turning the knob, and then move the carriage out.

3. Carriage

Discharges ink onto the media, and is equipped with print heads and a media sensor. It is possible to adjust the height of the print heads to match the thickness of the media. To adjust the height of the print heads, see page 147 "Head Height".

4. Capping station

Prevents nozzles from drying by capping the print heads. To clean caps, see "Cleaning the Caps", Requests for Daily Care and Maintenance.

5. Flushing cartridge

Use when performing head cleaning or auto maintenance. To replace the flushing cartridges, see page 242 "Replacing a Flushing Cartridge".

6. Media guide

Set media in accordance to its width. Set the media so that both edges pass under the media guides.

7. Platen

This is the media feeding surface (printing range). Clean this area if the back of the printed media becomes dirty. See "Cleaning the Platen", Requests for Daily Care and Maintenance.

8. Vacuum hole

Sucks media and prevents it from rising.

9. Feed roller

Feeds media.

10. Pinch roller

Holds down set media from above.

Symbols for Power Switch

Symbols for power switch that are used for this machine are as follows:

- I: POWER ON
- ⏻: STANDBY

Heater

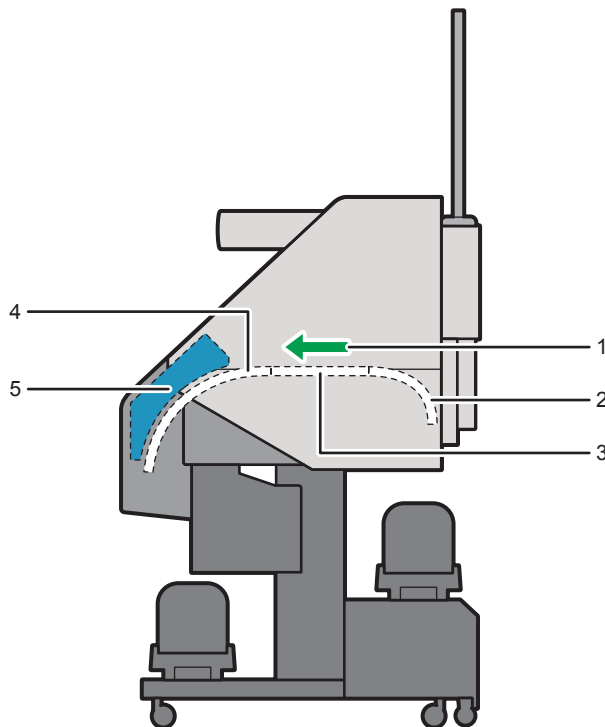
There are 4 heaters built into this machine to maintain print quality. The location of each heater and its function is as follows.

CIP Training L5160/L5130

Throughput

★ Important

- The media feeding surface is hot while the heater is heated. When opening the center cover or replacing media, lower the temperature of the heater and make sure the temperature of the media feeding surface has lowered sufficiently before working.
- When replacing thin media, lower the temperature of the heater. If replacing media when the media feeding surface is hot, it may cause the media to affix to the feeding surface as well as wrinkles or warping to occur.



DWT113

1. **Media feed direction**
2. **Pre-heater**
Pre-heats media before printing and suppresses sudden changes in the temperature on the platen.
3. **Print heater**
Heats media during printing and increases image quality.
4. **Post-heater**
Dries ink from below media after printing.
5. **Cure heater**
Heats and cures ink from above the media with far-infrared rays.

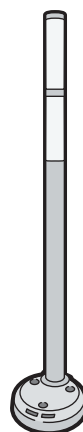
Throughput

Guide to Functions of the Attention Light

⚠ CAUTION

- Do not push or pull the attention light when it is installed to the machine. Doing so may result in damage or malfunction of the attention light or the machine.

The attention light notifies the user by light when there is a media jam or no media is left. The colors of the lamp and their meanings are as follows:



CUV121

Lamp	Status
The bottom lamp lights blue.	Printing
The bottom lamp flashes blue.	Data in
The top lamp lights red.	Error occurred (Example) <ul style="list-style-type: none"> When the service call message appears Media jam Out of media Out of ink Read the message on the display panel, and then take appropriate action.

Lamp	Status
The top lamp flashes yellow.	Warning (Example) <ul style="list-style-type: none"> Ink has nearly run out. Waste ink bottle is nearly full. Read the message on the display panel, and then take appropriate action.

CIP Training Pro C7200 series

Throughput

Turning On/Off the Power

★ Important

- Do not push the main power switch repeatedly.
- When you push the main power switch, wait at least 10 seconds after it is confirmed that the main power indicator has lit up or gone out.
- If the main power indicator does not light up or go out in 5 minutes after you push the main power switch, contact your service representative.

The main power switch is on the left rear of the machine. When this switch is turned on, the main power turns on and the main power indicator on the right side of the control panel lights up. When this switch is turned off, the main power turns off and the main power indicator on the right side of the control panel goes out. When this is done, machine power is off.

The machine has two power cords. Each power cord plug must be connected to a different power source that has an independent circuit breaker.

Normally, do not turn off the power of the machine. When the power is turned off for long periods, the auto maintenance function is not performed successfully. When unavoidably turning off the power or when removing the power plug, turn the power back on as soon as possible. If the auto maintenance function does not run, a dried print head may cause nozzles to clog, possibly leading to damage.

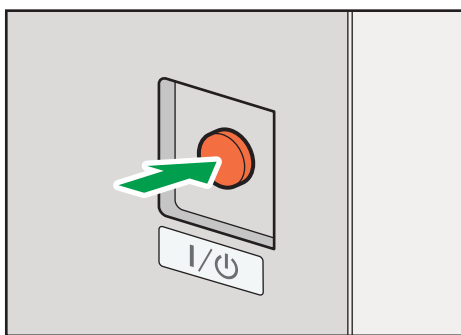
↓ Note

- This machine automatically enters Sleep mode if you do not use it for a certain amount of time.

Turning On the Power

1. Make sure the power cord is firmly plugged into the wall outlet.
2. Press the main power switch on the left rear of the machine.

The main power indicator on the control panel lights up.



DWT114

3. Turn on the power of the computer connected to the machine.

CIP Training L5160/L5130

Throughput

Turning Off the Power

★ Important

- Do not turn off the power while the machine is in operation. Doing so may result in nozzle clogging due to dried head, leading to malfunctions.
- Do not hold down the main power switch while turning off the power of the machine. Doing so forcibly turns off the machine's main power switch and may cause a malfunction.

Before you turn off the power, confirm:

- Data is not being received from a computer.
 - There is no data that has not been output yet.
 - The carriage is moved to the home position.
 - There is no error message displayed.
1. Turn off the power of the computer connected to the machine.
 2. Press the main power switch on the left rear of the machine, and then turn off the power. The main power indicator goes out. The power turns off automatically when the machine shuts down. If the screen on the control panel does not disappear, contact your service representative.

↓ Note

- If you find an error while turning off the power, resolve the error. For details, "When Messages Appear".
- Close the cover. If the cover is open, the auto maintenance function does not work.
- Confirm that the carriage has returned to the home position before turning off the power. If you turn off the power before the carriage returns to the home position, the print heads will dry, which may cause nozzle clogging.
- Do not turn off the power during printing. Otherwise, the carriage may not return to the home position.

Saving Energy

This machine has the following energy saving function.

Sleep mode

If the machine remains inactive for a specified period or the [Energy Saver] key is pressed, it enters Sleep mode to further reduce the electricity it consumes.

You can change the amount of time that the machine waits before switching to Sleep mode under [Sleep Mode Transition Time]. For details, see "Configuring Sleep Mode Transition Time".

To exit Sleep mode, do one of the following:

CIP Training L5160/L5130

Throughput

- Press one of the keys on the control panel.
- Touch the display panel.
- Raise the media holding lever.

↓ Note

- In Sleep mode, the [Energy Saver] key flashes slowly.
- The machine does not enter Sleep mode in the following cases:
 - When warm-up is in progress
 - When operations are suspended during printing
 - When a warning message appears
 - When media is jammed
 - When the service call message appears
 - When the "Replace the cartridge." message appears
 - When ink is being replaced
 - When one of the following screens is displayed:
 - [Initial Setting] screen
 - [Maintenance] screen
 - [Print Adjustment] screen
 - [Heater Settings] screen
 - [Origin Setting] screen
 - When data is being processed
 - When the Data In indicator is lit or flashing
 - When one of the machine's covers is open
 - When a unit setting error occurs
 - When roll media has run out
 - When auto maintenance is in progress

CIP Training L5160/L5130

Throughput

Replacing an Ink Cartridge

Use the ink cartridge within 3 months after opening it.

Replace the corresponding color ink cartridge or displacement cartridge when the following messages appear on the display panel:

"The ink in one of the cartridges is depleted. Replace the appropriate cartridge."

"An ink cartridge has expired. Replace the appropriate cartridge."

"The displacement cartridge is depleted. Replace the displacement cartridge."

When the following messages appear on the display panel, the corresponding color ink cartridge or displacement cartridge should be replaced soon. Prepare a new ink cartridge or displacement cartridge.

"The ink cartridge is almost empty. Prepare a replacement ink cartridge."

"The displacement cartridge is almost empty. Prepare the displacement cartridge."

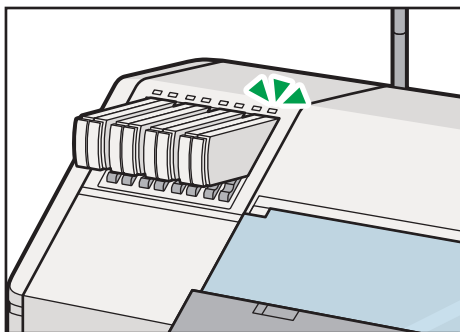
If two ink cartridges of the same color are installed, and if one of them is usable, the machine can still be used.

Replacing an ink cartridge

This section describes how to replace the ink cartridge. When replacing the displacement cartridge, replace it according to the same procedure.

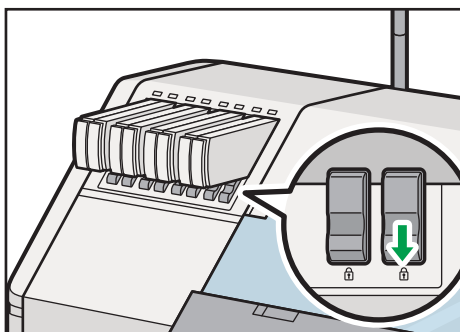
1. Check which lamp is lit from the ink indicator located on the left side of the machine.

The lamp which indicates that an ink cartridge needs to be replaced is lit.



DWT195

2. Slide down the lock lever to unlock the ink cartridge that needs to be replaced.

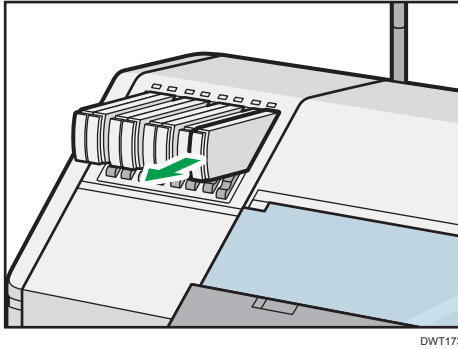


DWT172

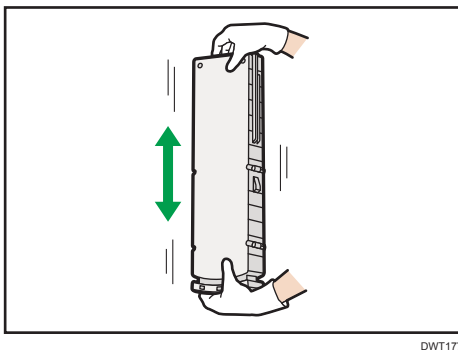
CIP Training L5160/L5130

Throughput

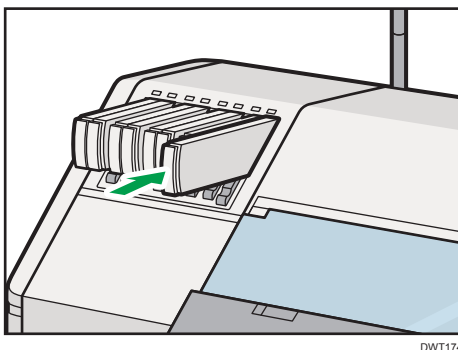
3. Pull out the used ink cartridge.



4. Take the new ink cartridge out of the plastic bag.
Put the used ink cartridge in the supplied plastic bag.
5. Shake the ink cartridge up and down with its connecting part on top.
 - When replacing the white ink cartridge, firmly shake it up and down at least 40 times.
 - Do not touch the IC chip on the ink cartridge.
 - Do not shake the ink cartridge strongly. Doing so might cause the ink to leak.
 - When replacing the displacement cartridge, it is not necessary to shake the cartridge.



6. Fully insert a new ink cartridge into the holder until it stops.

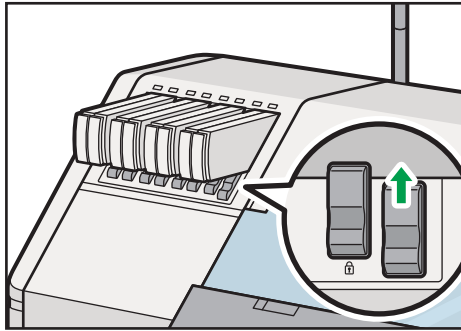


CIP Training L5160/L5130

Throughput

- Slide up the lock lever to lock the new ink cartridge.

Wait until the ink indicator turns off and the message disappears.



DWT175

Note

- When printing is interrupted, the confirmation screen will be displayed after replacing the cartridges. Press [Resume] to restart printing. However, the quality of the print cannot be guaranteed.

Replacing a Cleaning Cartridge

Replace the cleaning cartridge when the following message appears on the display panel:

"The cleaning cartridge is depleted. Replace the cleaning cartridge."

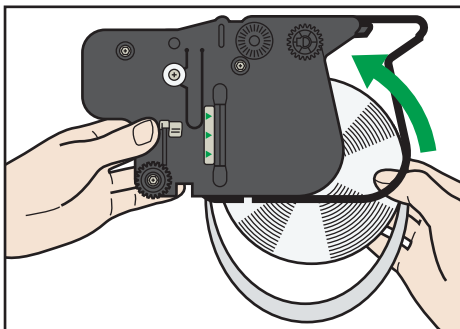
When the following message appears on the display panel, the cleaning cartridge should be replaced soon. Prepare a new cleaning cartridge.

"The cleaning cartridge has almost finished. Prepare a cleaning cartridge."

Important

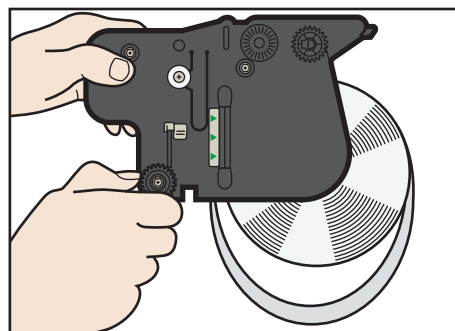
- When replacing with a new cleaning cartridge, reel the flushing pad so that it does not hang down.

- Correct



DWT071

- Incorrect (Rotating the gear)

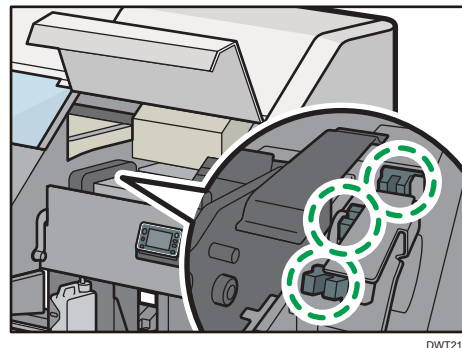
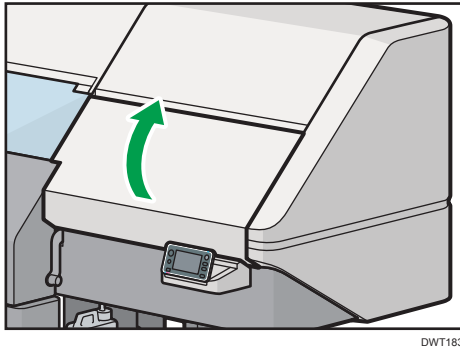


DWT070

CIP Training L5160/L5130

Throughput

1. Open the right cover.

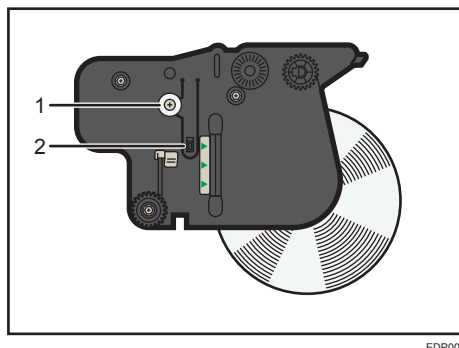
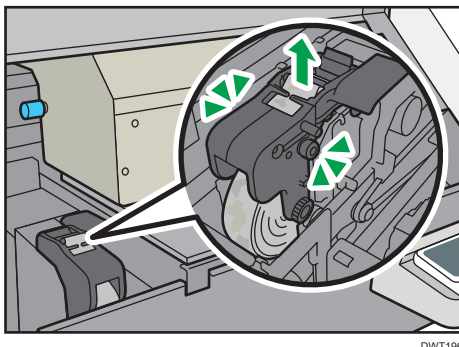


- When you replace the cleaning cartridge, do not touch the sensors that are shown in the following illustration. Touching these sensors may cause malfunctions.

2. Pull out the used cleaning cartridge upward.

Hold the knobs on both sides of the cleaning cartridge and lift it straight up.

When removing the nozzle cleaning cartridge, be sure to hold the knobs on its sides. If you do not, the hook may be damaged.



1. Knob
2. Hook

3. Take the new cleaning cartridge out of the box.

Put the used cleaning cartridge in the supplied plastic bag.

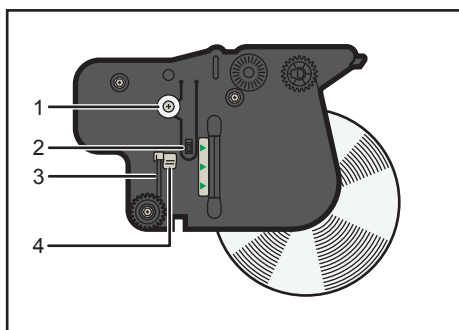
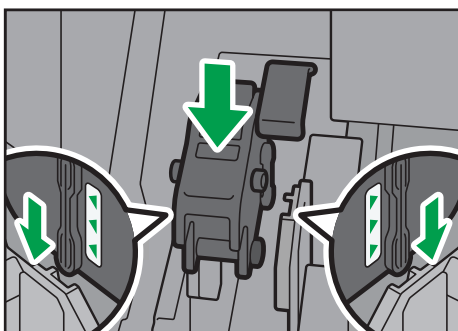
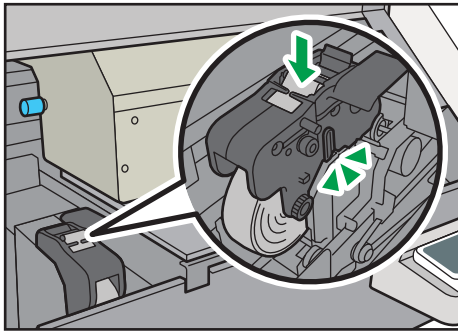
CIP Training L5160/L5130

Throughput

4. Fully insert the new cleaning cartridge into the holder until it stops.

Align the tabs on the cleaning cartridge with the indents on the holder.

When mounting the nozzle cleaning cartridge on the machine, align the protruding part of the cartridge with the indent in the machine.



1. Knob
2. Hook
3. Web slack prevention member
4. Looseness prevention member

5. Raise the lock lever located inside of the right cover on the left, and then close the right cover.

↓ Note

- When printing is interrupted, the confirmation screen will be displayed after replacing the cartridge. Press [Resume] to restart printing. However, the quality of the print cannot be guaranteed.

Throughput

Replacing a Flushing Cartridge

Replace the flushing cartridge when the following messages appear on the display panel:

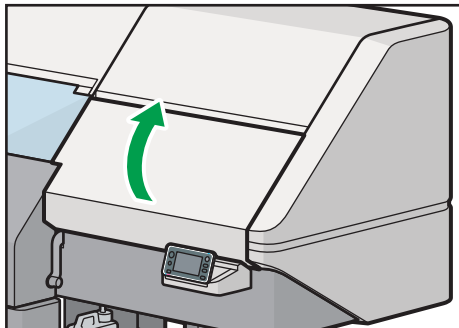
"The flushing cartridge is depleted. Replace the flushing cartridge."

"The flushing cartridge has expired. Check for the appropriate flushing cartridge."

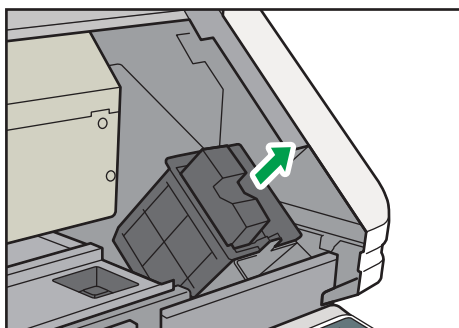
When the following message appears on the display panel, the flushing cartridge should be replaced soon. Prepare a new flushing cartridge.

"The flushing cartridge has almost finished. Prepare a flushing cartridge."

1. Open the right cover.



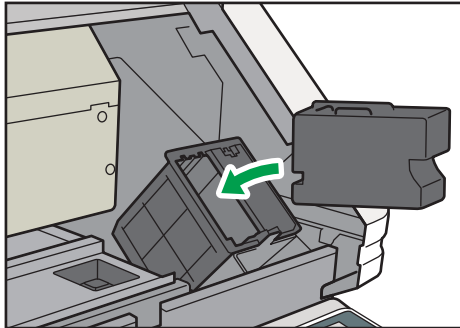
2. Pull out the used flushing cartridge.



3. Take the new flushing cartridge out of the box.
Put the used flushing cartridge in the supplied plastic bag.
4. Fully insert the new flushing cartridge into the holder until it stops. Align the tabs on the flushing cartridge with the indents on the holder.

CIP Training L5160/L5130

Throughput



DWT199

5. Raise the lock lever located inside of the right cover on the left, and then close the right cover.

Note

- When printing is interrupted, the confirmation screen will be displayed after replacing the cartridge. Press [Resume] to restart printing. However, the quality of the print cannot be guaranteed.

Replacing a Waste Ink Bottle

Replace the waste ink bottle when the following message appears on the display panel:

"The waste ink bottle is full. Replace the waste ink bottle and reset the waste ink level."

When the following message appears on the display panel, the waste ink bottle should be replaced soon. Prepare a new waste ink bottle.

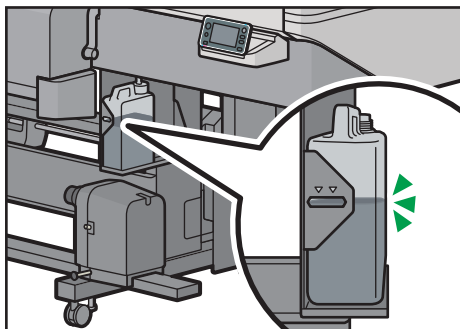
"The waste ink bottle is nearly full. Prepare a waste ink bottle."

Important

- Do not replace the waste ink bottle while the machine is printing or during maintenance.
- Before replacing the waste ink bottle, spread paper around the area to keep ink from dirtying your workspace.
- If the paper towel spread under the waste ink bottle is stained, replace it with a new supplied paper towel.

1. Check the capacity of the waste ink bottle.

When the amount of waste ink reaches the full bottle marker, replace the waste ink bottle.

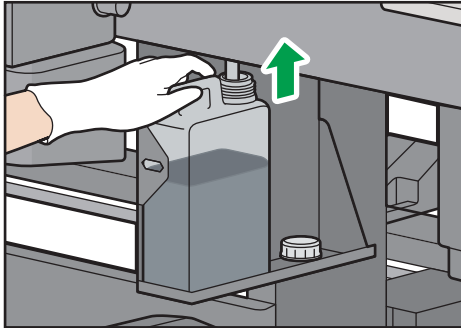


DWT201

CIP Training L5160/L5130

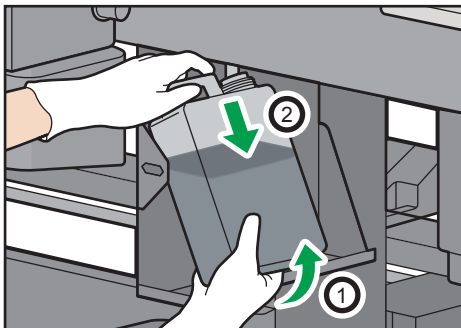
Throughput

2. Clutch the handle of the waste ink bottle, and then lift up the bottle.



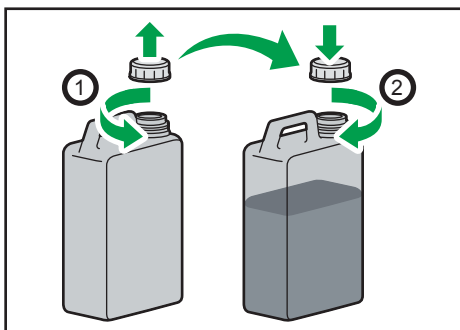
DWT202

3. Hold the bottom of the waste ink bottle, and then tilt the bottle before removing it.
Remove the waste ink bottle while being careful of the tube inserted into the spout of the bottle.



DWT203

4. Uncap the new waste ink bottle, and then attach the inner and outer caps of the used waste ink bottle.

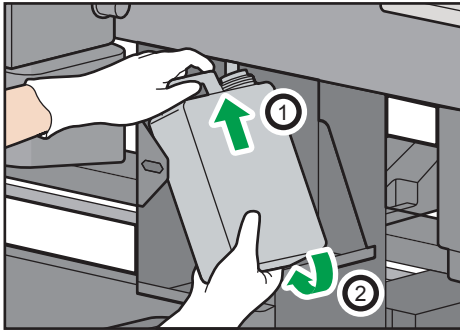


DWT204

CIP Training L5160/L5130

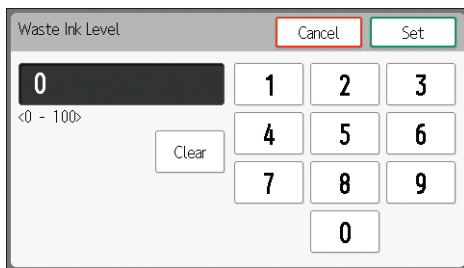
Throughput

5. Wipe off any ink that dripped around the tube, and then install the new waste ink bottle.
When installing the waste ink bottle, insert the tube into the spout of the bottle.



DWT205

6. Press [Reset].
7. Press [0] to set the waste ink level to 0%.



8. Press [Set].
9. Press [End].

Note

- When printing is interrupted, the confirmation screen will be displayed after replacing the waste ink bottle. Press [Resume] to restart printing. However, the quality of the print cannot be guaranteed.

CIP Training L5160/L5130

Throughput

Ink Cartridges

The Ricoh Pro L5130 and L5160 have eight ink cartridge slots. Two different ink configurations are available:

- 4-Colour model: K K M M C C Y Y (2 x Black, 2 x Magenta, 2 x Cyan, 2 x Yellow).
- 4-Colour + White: K M C Y W W W W (1 x Black, 1 x Magenta, 1 x Cyan, 1 x Yellow, 4 x White).

Cartridge Description	Code	Ink Bottle Capacity	Storage
Pro AR Ink Cartridge Black L5160 H	344107	1,200 ml	24 months after production (sealed) 3 months once opened
Pro AR Ink Cartridge Cyan L5160 H	344108	1,200 ml	24 months after production (sealed) 3 months once opened
Pro AR Ink Cartridge Magenta L5160 H	344109	1,200 ml	24 months after production (sealed) 3 months once opened
Pro AR Ink Cartridge Yellow L5160 H	344110	1,200 ml	24 months after production (sealed) 3 months once opened
Pro AR Ink Cartridge White L5160 H	344111	1,200 ml	24 months after production (sealed) 3 months once opened
Pro AR Ink Cartridge White L5160	344106	600 ml	24 months after production (sealed) 3 months once opened

Other Consumables

Other consumables for the Ricoh Pro L5130 and L5160 Latex Wide Format Printers include cleaning and maintenance items.

Consumables description	Code	Comments
Maintenance Kit Type C2	344112	Maintenance set includes: 200 ml flushing solution (1 bottle) Rubber gloves (3 sets) Droppers (2 units)
Cleaning Cartridge Type C2	344113	Consumable used to automatically clean print head (target yield is 1.5 months per unit based on average monthly print volume)
Waste Ink Bottle Type C2	344114	Waste ink used in head cleaning is stored in Waste Ink Bottle. Alert message is generated on printer when 80% (1.6 L) of the 2.0 L capacity is reached
Cleaning Stick Type C2	344115	Used to clean around print head and cap rubbers (50 sticks)
Displacement Cartridge Type C2	344116	Consumable item used when extended period of White not being utilised (as alternative to White ink), 600 ml capacity per cartridge
Flushing Cartridge Type C2	344117	Cleaning liquid cartridge (200 ml container)

Recycle: Ricoh consumable recycling

Our consumable recycling program is free to our customers as part of our goal to reach zero waste-to-landfill. Setting the industry benchmark, the program has recycled over 1,104 tonnes of toner cartridges. The program includes a free pickup service for qualifying customers and a Reply Paid return service.

<https://www.ricoh.com.au/support/my-device/recycle>

Throughput

Clearing misfeeds

WARNING

- Do not remove any covers or screws other than those explicitly mentioned in this manual. Inside this machine are high voltage components that are an electric shock hazard. Contact your sales or service representative if any of the machine's internal components require maintenance, adjustment, or repair.
- Do not attempt to disassemble or modify this machine. Doing so risks burns and electric shock.

CAUTION

- When performing maintenance on the machine, make sure to wear the attached gloves.
- Some of this machine's internal components get very hot. For this reason, take care when removing misfed and performing maintenance on the machine. Not doing so could result in burns.
- When removing jammed media, make sure not to trap or injure your fingers.
- There is a cutter outside the machine for cutting print media. Do not touch any other parts other than the ones described in this manual when loading or replacing media, or removing jammed media. Otherwise, it may cause an injury.
- When removing jammed media or performing maintenance on the machine, avoid getting ink, flushing liquid, and displacement liquid on your clothing. If ink, flushing liquid, and displacement liquid come into contact with your clothing, wash the stained area with water.
- When removing jammed media, replacing media, or performing maintenance on the machine, avoid getting ink, flushing liquid, and displacement liquid on your skin. If ink, flushing liquid, and displacement liquid come into contact with your skin, wash the affected area thoroughly with soap and water.
- The supplied gloves are consumables. If they are damaged or lost, use polythene gloves instead.

Important

- When removing jammed media, do not turn off the power.
- To prevent media misfeeds, do not leave any torn scraps of media inside the machine. Doing so may cause a misfeed and malfunction.

CIP Training L5160/L5130

Throughput

If the actions recommended in this manual cannot resolve the problem, contact your service representative.

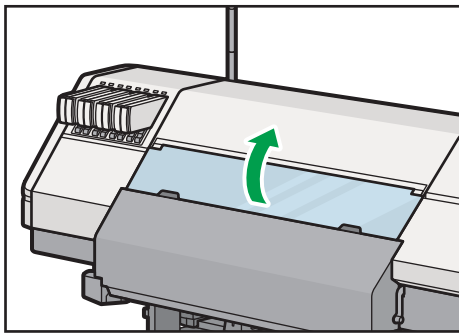
- If the error message remains displayed even after you remove jammed media, fully open the center cover and right cover, and then close them.
- Do not set media immediately after you remove jammed media. Close the center cover after you remove the jammed media, and then wait until the "Please wait." message disappears from the screen.
- After removing the jammed media, check the following. If any of these conditions are not met, a message about the jammed media will continue to display.
 - Jammed or torn media are not left in the machine.
 - The cutter unit is returned to the home position (right side).
 - The center cover and pre-heater cover are closed.
 - The media holding lever is locked.
 - There is media remaining.
 - The roll feed unit is not pulled out.

When a message about jammed media appears on the control panel, follow the instructions on the screen to remove the jammed media.

Removing Jammed Media Inside the Centre Cover

Remove the jammed media inside the center cover when the following message appears on the display: "Open the center cover and then check the carriage and the media."

1. Open the center cover on the front of the machine.

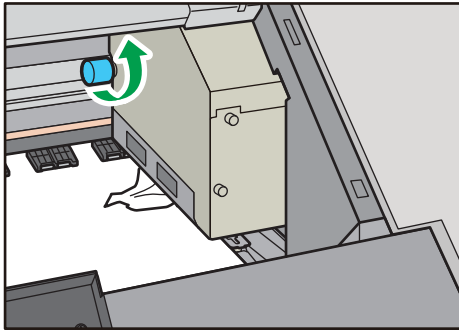


DWT134

2. Wear gloves, and then check for jammed media.
3. Turn the head height adjustment knob to "2" to raise the carriage to a height where the carriage does not interfere with the media.
If the carriage is in the home position, proceed to Step 5.

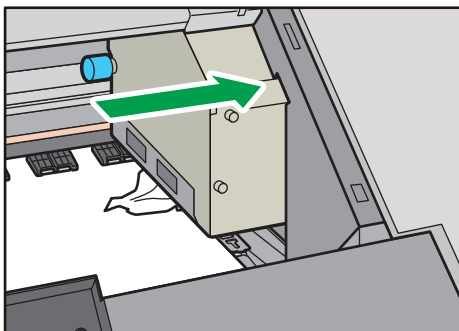
CIP Training L5160/L5130

Throughput



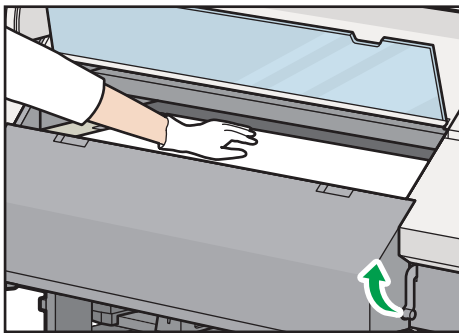
DWT211

4. Slowly move the carriage in the direction from which it comes.



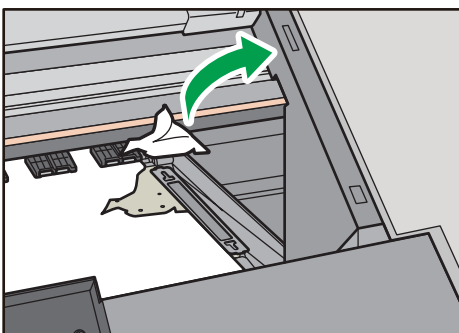
DWT212

5. Raise the media holding lever (front).
The pinch rollers rise and the media is unfixed.



DWT135

6. Remove jammed or torn media.
Remove torn scraps of media carefully to prevent them from tearing.

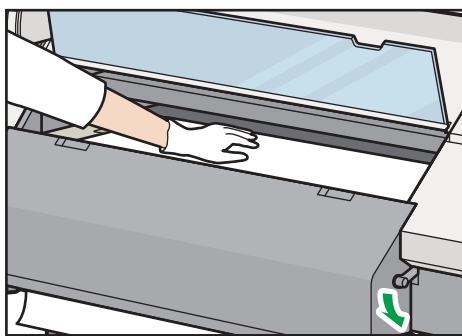


DWT213

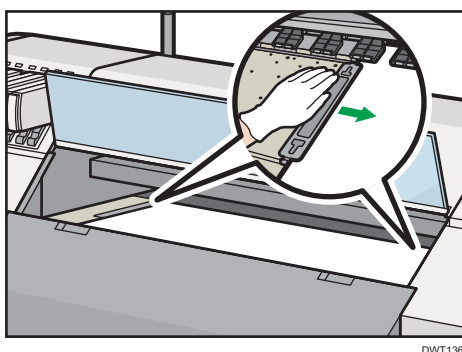
CIP Training L5160/L5130

Throughput

7. While holding down the center of the media, pull the media straight out to the media output location.
8. While holding down the center of the media, lower the media holding lever (front). The pinch rollers lower and the media is fixed.

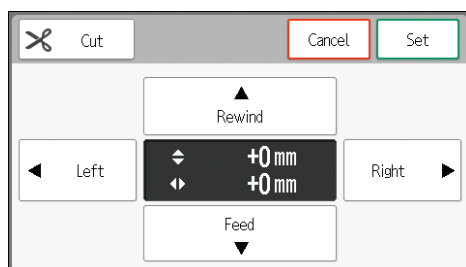


9. Move the left and right media guides to match the media width.



10. Close the center cover.

When cutting torn media, press [Feed] to roll up the printing surface of the media completely before cutting.



11. Perform [Nozzle Cleaning: High].

Note

- If ink adheres on the internal components of the machine while removing jammed media, the back side of media may get dirty. If the back side of media gets dirty after the jammed media is removed, clean the platen. For details about cleaning, see "Cleaning the Platen", Requests for Daily Care and Maintenance.

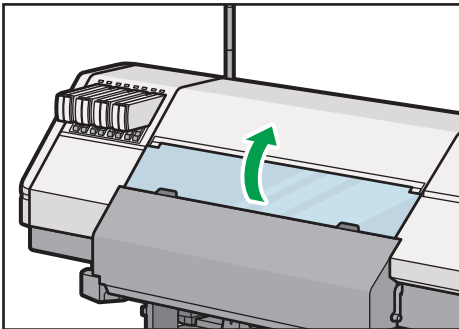
CIP Training L5160/L5130

Throughput

Removing Jammed Media in the Cutter Unit

Remove the jammed media in the cutter unit when the following message appears on the display:
"Check the cutter and then open and close the center cover."

1. Remove jammed media in the cutter unit.
2. Open the center cover on the front of the machine.



DWT134

3. Close the center cover.

RICOH
imagine. change.