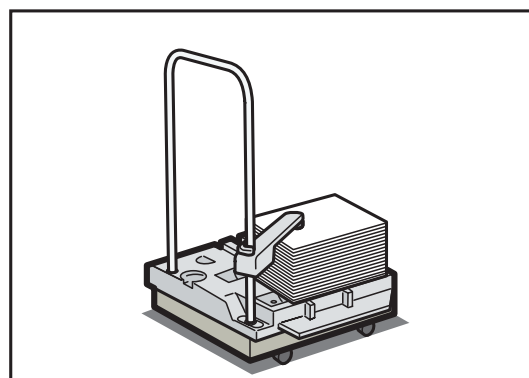
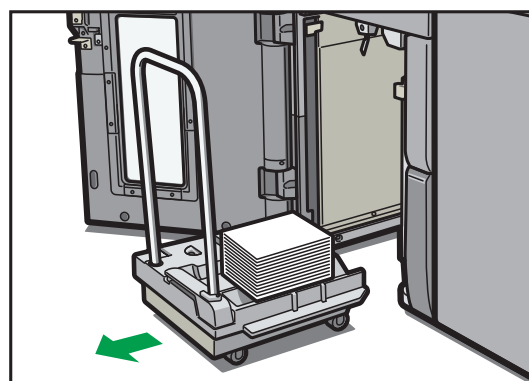
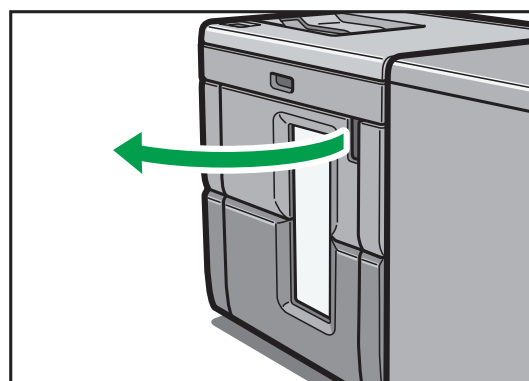


# CIP Training

Pro C9200 series

## 3 Output

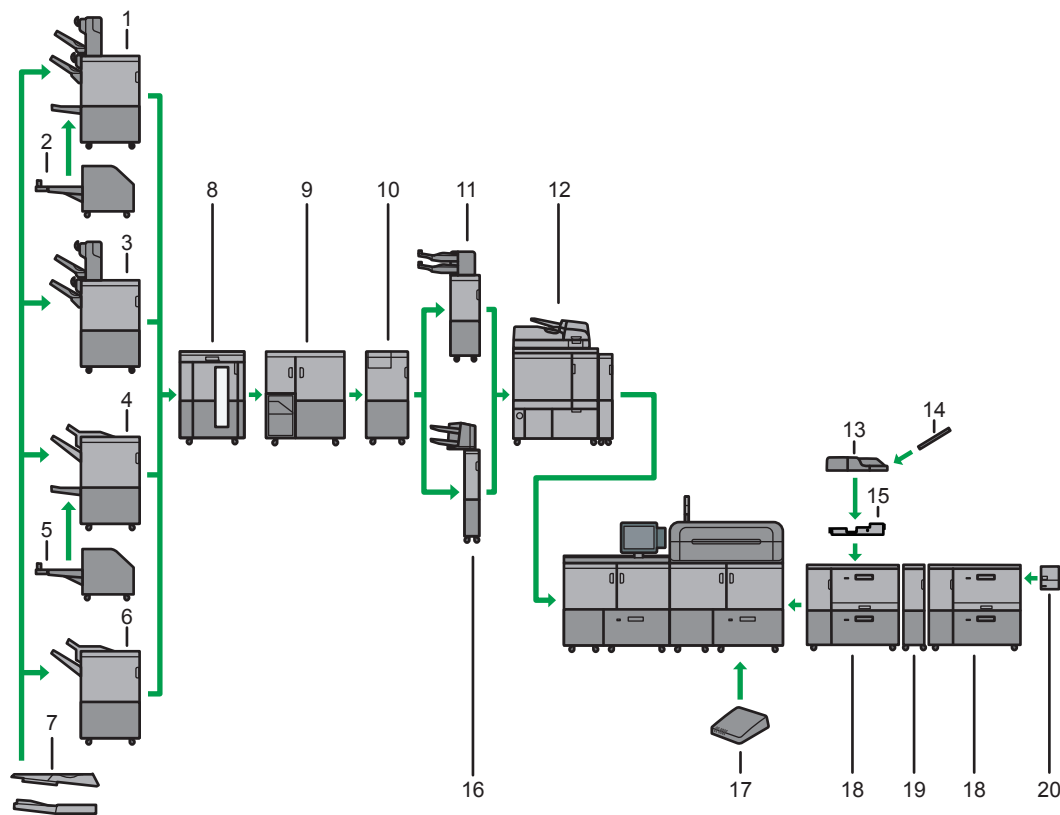
**RICOH**  
imagine. change.





## Output

### Guide to the Machine's Output Options



#### 1. Booklet Finisher SR5120

Sorts, stacks, and staples multiple sheets of paper. The saddle stitch function can staple multiple sheets of paper in the center and fold them into booklets. Consists of the following paper trays:

- Finisher upper tray 1
- Finisher shift tray 2
- Finisher booklet tray

Prints can be punched if the optional punch unit is installed on the finisher.

#### 2. Trimmer unit TR5050

Cuts the fore edge of the book block after the book block is saddle stitched.

Booklet Finisher SR5120 is required in order to attach this.

#### 3. Finisher SR5110

- Sorts, stacks, and staples multiple sheets of paper. Consists of the following paper trays:
- Finisher shift tray 1
- Finisher shift tray 2

Prints can be punched if the optional punch unit is installed on the finisher.

# CIP Training Pro C9200 series

## Output

### 4. Booklet Finisher SR5060

Sorts, stacks, and staples multiple sheets of paper. The saddle stitch function can staple multiple sheets of paper in the center and fold them into booklets. Consists of the following paper trays:

- Finisher upper tray
- Finisher shift tray
- Finisher booklet tray

Prints can be punched if the optional punch unit is installed on the finisher.

### 5. Trimmer unit TR5040

Cuts the fore edge of the book block after the book block is saddle stitched.

Booklet Finisher SR5060 is required in order to attach this.

### 6. Finisher SR5050

Sorts, stacks, and staples multiple sheets of paper. Consists of the following paper trays:

- Finisher upper tray
- Finisher shift tray

Prints can be punched if the optional punch unit is installed on the finisher.

### 7. SR5000 series output tray for banner sheet

Allows you to output paper that has a horizontal length of 487.8 mm (19.21 inches) or longer on Finisher SR5050/SR5110 or Booklet Finisher SR5060/SR5120.

### 8. High capacity stacker

Consists of the following paper trays:

- Stacker upper tray
- Stacker tray

The stacker upper tray can hold up to 250 sheets of paper, and stacker tray can hold up to 5,000 sheets of paper. You can connect up to two high capacity stackers.

### 9. Ring binder

Binds sheets of paper with a ring comb.

### 10. Multi-folding unit

Applies the following folds: Half Fold, Letter Fold-out, Letter Fold-in, Double Parallel Fold, Gate Fold, and Zfold.

### 11. Interposer CI5040

Inserts cover or slip sheets into printed paper. By attaching the double-feed detection kit for the interposer, the machine is configured to detect double feeds from the interposer.

You can attach Finisher SR5110 or Booklet Finisher SR5120 together with this.

Depending on when the machine was bought, this option may not be available. For details, contact your service representative.

### 12. Perfect binder

Applies adhesive to the spine of gathered pages to bind them in a booklet.

# CIP Training Pro C9200 series

## Output

### 13. Multi bypass tray (Tray A)

Holds up to 500 sheets of paper.

### 14. Banner sheet tray of multi bypass tray (Tray A)

Allows you to load large-sized paper in the multi bypass tray (Tray A).

### 15. Multi bypass attachment kit

Attaches the multi bypass tray (Tray A) to the wide LCT.

### 16. Interposer CI5030

Inserts cover or slip sheets into printed paper.

You can attach Finisher SR5050 or Booklet Finisher SR5060 together with this.

### 17. Interface box

Allows you to connect extended options to the machine.

### 18. Wide LCT

Holds up to 4,800 sheets of paper. You can load paper whose sizes are up to SRA3 or 13 × 191/5. You can connect up to three wide LCTs.

### 19. Bridge unit of wide LCT

Connects a wide LCT to an additional wide LCT.

### 20. Banner sheet tray of wide LCT

Allows you to load large-sized paper in the wide LCT.

#### Note

- You cannot install multiple finishers simultaneously.
- If you have connected two high capacity stackers, you cannot install the multi-folding unit, the ring binder, or the perfect binder.
- You cannot attach the banner sheet tray of wide LCT and the banner sheet tray of multi bypass tray (Tray A) simultaneously.
- You can install the multi-folding unit only if either Finisher SR5050/SR5110 or Booklet Finisher SR5060/SR5120 is installed.
- You can install the ring binder or the perfect binder only if one of the following options is installed: Finisher SR5050/SR5110, Booklet Finisher SR5060/SR5120, or the high capacity stacker.
- You cannot install the ring binder and perfect binder simultaneously.
- • Booklet Finisher SR5120, Finisher SR5110, Interposer CI5040, and Trimmer unit TR5050 cannot be used with the TotalFlow print server.
- The multi bypass tray (Tray A) can be attached only if the wide LCT is installed. However, you can attach the multi bypass tray (Tray A) to the wide LCT only if the multi bypass attachment kit is installed.

# CIP Training Pro C9200 series

## Output

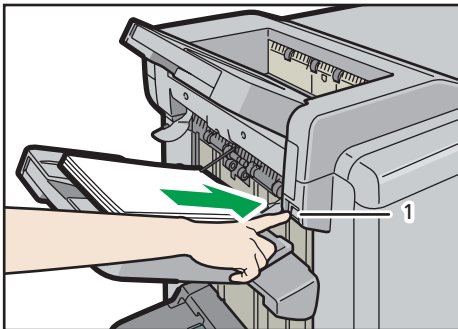
- When the Ring Binder or Perfect Binder is attached, printing on banner paper (700.1–1260 mm, is not possible. You can specify such paper as a custom size paper on the control panel, but the machine aborts preparation when printing is performed. If this occurs, cancel the job.
- Paper is ejected with the print side facing up when printing on banner paper with the banner sheet tray of multi bypass tray (Tray A) or banner sheet tray of wide LCT attached. The output orientation specified on the color controller or in the printer driver is ignored.
- When using multiple linked wide LCTs, the multi bypass tray (Tray A) can be attached only to the wide LCT closest to the machine.
  - The banner sheet tray of wide LCT can be attached to the following trays:
    - When using a single wide LCT: Tray 3
    - When using 2 linked wide LCTs: Tray 5
    - When using 3 linked wide LCTs: Tray 7

### Removing prints from Finisher SR5050 or Booklet Finisher SR5060 during printing.

This section describes how to suspend a print job when using Finisher SR5050 or Booklet Finisher SR5060.

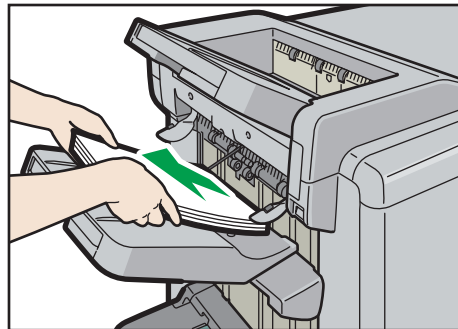
Depending on the image you are printing, prints might not stack properly. If this happens, suspend the job, remove the prints and then restart the job.

1. Press the [Suspend / Resume] key.



1. [Suspend / Resume] key

2. Remove the stack of paper from the finisher shift tray.



3. Press the [Suspend / Resume] key to restart the print.

#### ↓ Note

- You can suspend printing only when the finisher shift tray is selected as the output tray.

# CIP Training Pro C9200 series

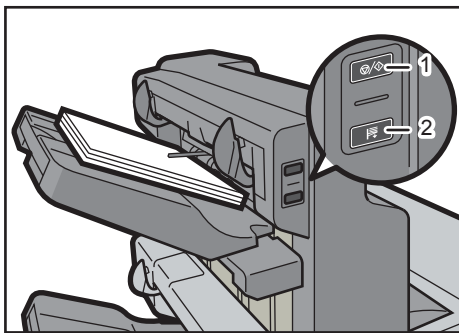
## Output

### Removing prints from Finisher SR5110 or Booklet Finisher SR5120 during printing or when in standby state

- Notes on removing paper from the shift tray  
When removing the paper delivered to the shift tray, if you remove the paper at an angle or towards the front of the machine, the shift tray may rise and catch on the paper. Press the [Suspend / Resume] key before removing the paper.
- Removing paper during printing  
When delivering paper to the shift tray with Finisher SR5110 or Booklet Finisher SR5120, the paper may be misaligned depending on the type of printed image. If this happens, suspend printing, remove the paper, and then resume printing.

#### If delivered to finisher shift tray 1.

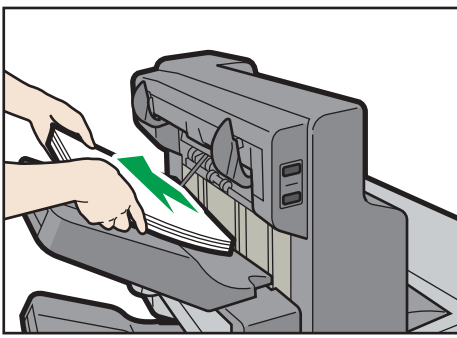
1. Press the [Suspend / Resume] key.



1. [Suspend / Resume] key.
2. [Remove Paper] key.

2. Press the [Remove Paper] key.

3. After the tray is lowered, remove the delivered paper.



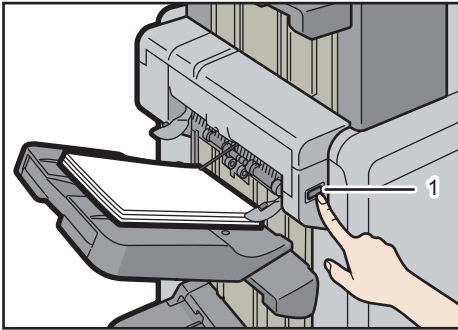
4. Press the [Suspend / Resume] key to restart the print.

# CIP Training Pro C9200 series

## Output

If delivered to finisher shift tray 2

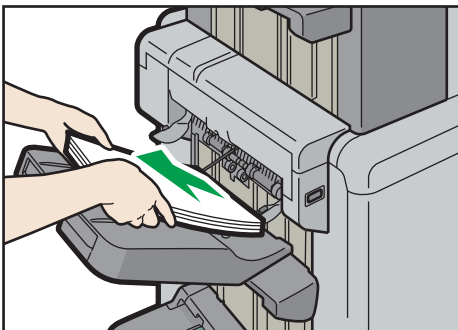
1. Press the [Suspend / Resume] key of finisher shift tray 2.



EAQ126

1. [Suspend / Resume] key.

2. Remove the stack of paper from the finisher shift tray 2.



EAQ127

3. Press the [Suspend / Resume] key to restart the print.



# CIP Training Pro C9200 series

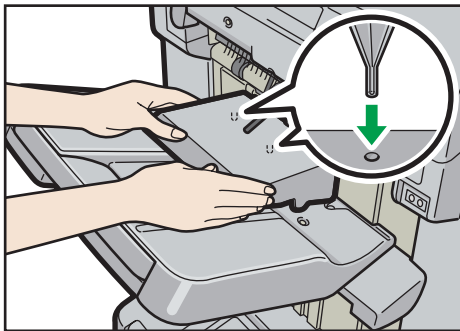
## Output

### When using the Z-fold function

To use the Z-fold function, you must attach the Z-fold support tray.

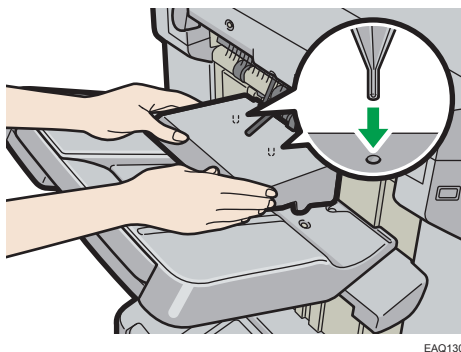
#### Finisher SR5050 and Booklet Finisher SR5060

- Finisher shift tray  
Attach the Z-fold support tray by inserting the two protrusions on its underside into the holes on the finisher shift tray.



#### Finisher SR5110 and Booklet Finisher SR5120

- Finisher shift tray 1 or 2  
Attach the Z-fold support tray by inserting the two protrusions on its underside into the holes on the finisher shift tray 1 or 2.



EAAQ130

If you set [Finisher Output Tray Setting] to [Auto Change] and [Do not Stack Jobs], and change where to deliver the paper when the Z-fold support tray is attached, multiple jobs may be delivered to and stacked on the same tray.

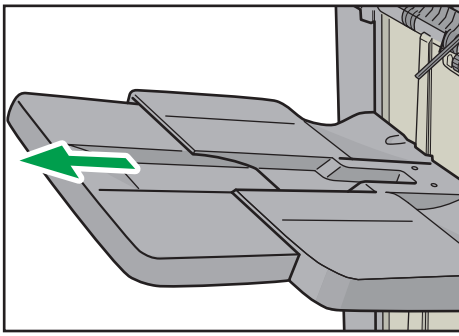
## CIP Training Pro C9200 series

### Output

#### When ejecting thin paper to Finisher SR5110 or Booklet Finisher SR5120

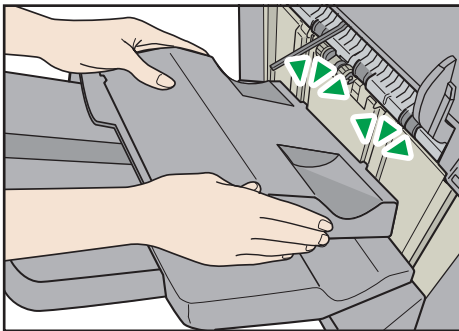
When ejecting plain paper of length 420.1 mm or more and weighing 64 g/m<sup>2</sup> or less to Finisher SR5110 or Booklet Finisher SR5120, attach the supplied thin paper support tray.

1. Press the [Suspend / Resume] key on Finisher SR5110 or Booklet Finisher SR5120, and then remove the delivered paper.
2. Pull out the extension tray on the finisher shift tray 1 or 2.



EAQ138

3. Attach the thin paper support tray by fitting its protrusions in the slots on the finisher.



CDN026

4. Press the [Suspend / Resume] key to resume printing.

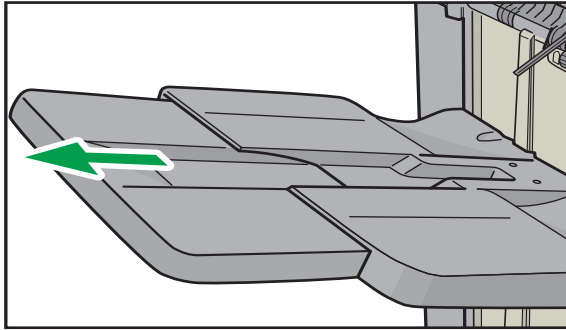
#### When ejecting carbonless paper weighing 63 g/m<sup>2</sup> or less to Finisher SR5110 or Booklet Finisher SR5120

When printing on carbonless paper weighing 63 g/m<sup>2</sup> or less, set the banner support tray that is provided with the finisher on the finisher shift tray.

# CIP Training Pro C9200 series

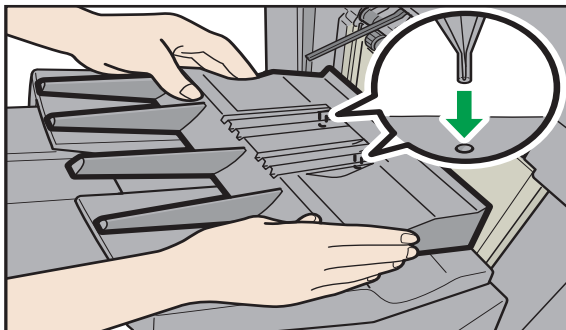
## Output

1. Press the [Suspend / Resume] key on Finisher SR5110 or Booklet Finisher SR5120, and then remove the delivered paper.
2. Pull out the extension tray on the finisher shift tray 1 or 2.



EAO138

3. Attach the banner support tray by inserting the protrusions on its underside into the holes on the finisher shift tray 1 or 2.



ECQ004

4. In [Adjustment Settings for Operators], set [0671: Paper Alignment Angle on Shift Tray] to "10 deg".
5. Press the [Suspend/Resume] key to resume printing.

### ↓ Note

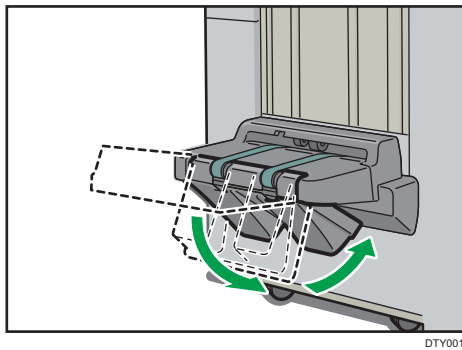
- Depending on the brand of the paper being used, the paper may be ejected normally even when the banner support tray is not attached.
- When the banner support tray is attached, output sheets may not be stacked neatly.
- If you set [Finisher Output Tray Setting] to [Auto Change] and [Do not Stack Jobs], and change where to deliver the paper when the banner support tray is attached, multiple jobs may be delivered to and stacked on the same tray.

# CIP Training Pro C9200 series

## Output

### When ejecting a large number of booklets to finisher booklet tray

When ejecting a large number of booklets to Booklet Finisher SR5060/SR5120, fold the booklet finisher tray under as shown.

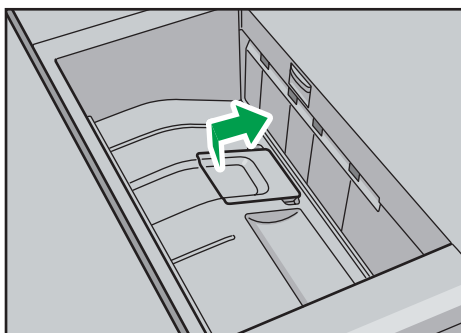


#### Note

- The finisher booklet tray can be folded in two angles.
- The approximate number of copies that can be ejected when the finisher booklet tray is not folded is as follows:
  - When binding 2–5 sheets: 45 copies
  - When binding 6–10 sheets: 23 copies
  - When binding 11–15 sheets: 15 copies
  - When binding 16–20 sheets: 10 copies
  - When binding 21–30 sheets: 5 copies

### Multifold Unit

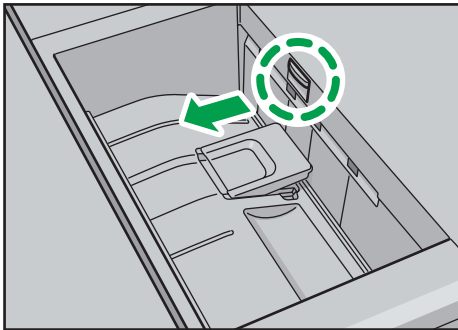
1. Lift up and slide the Z-fold support tray for multi-folding unit to the right, and then set it in place.



# CIP Training Pro C9200 series

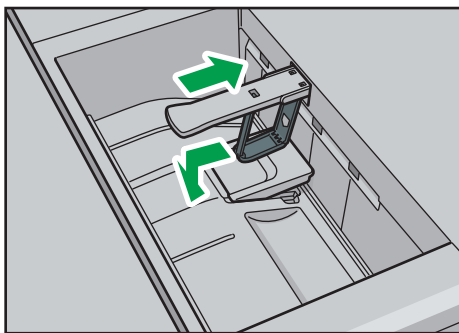
## Output

2. Pull out the output holding unit for letter fold-out.



CWR008

When you have finished using the Z-fold support tray for multi-folding unit and the output holding unit for letter fold-out, return each to their previous positions.

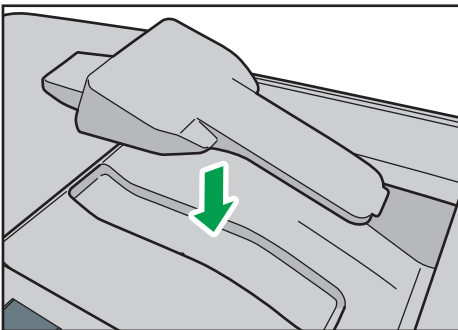


CWR009

### When ejecting thick paper or envelopes to the upper tray of the high capacity stacker

Attach the supplied thick paper support tray when ejecting the following paper to the upper tray of the high capacity stacker:

- Thick paper longer than the length of B4 JIS
- Envelopes that exceed 332 mm (13.1 inches) in length



DWP023

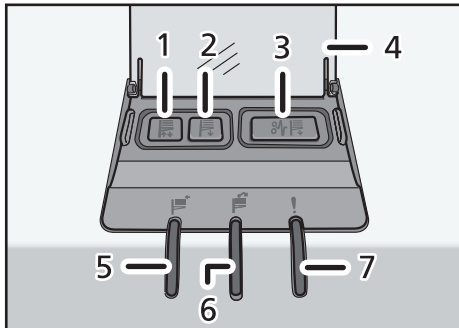
# CIP Training Pro C9200 series

## Output

### Using the high capacity stacker

#### Stacker control panel

The high capacity stacker has a control panel that you can use to lower the stacker tray and confirm the status of the high capacity stacker.



1. Tray Moving Indicator

This flashes blue when the stacker tray is moving up or down. When the stacker tray has moved all the way up and is in the standby state, the indicator turns off. When the stacker tray has moved all the way down, the indicator lights up blue.

2. Lower Tray Button

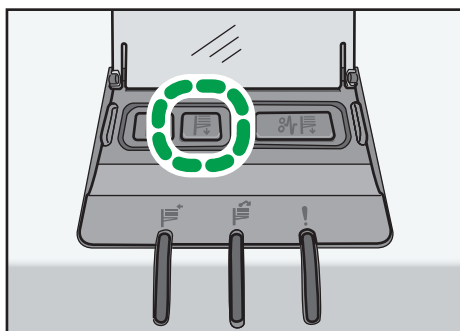
Press this button to lower the tray. The tray cannot move if the stacker front cover is open.

#### Removing paper

**★ Important**

- Use the stacker cart for transporting paper from the high capacity stacker. Do not use the stacker cart for any other purpose.
- Do not attempt to get inside the high capacity stacker.
- The paper press might leave a mark on the top of the paper stack. To prevent this, put several sheets of unwanted paper or a protective sheet between the paper press and the paper stack.

1. Open the cover of the stacker control panel, and then press the lower tray button.



# CIP Training Pro C9200 series

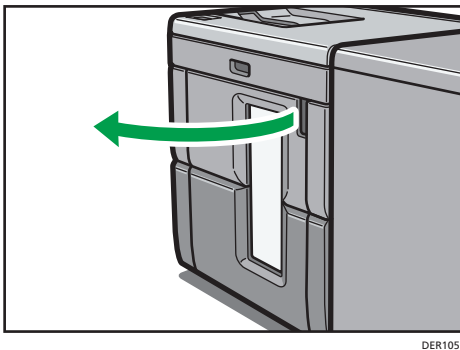
## Output

To stop the lowering stacker tray, press the lower tray button again.

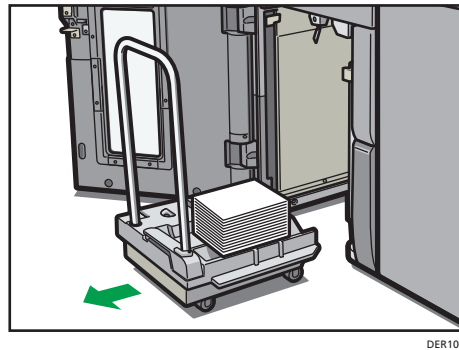
To resume lowering the tray, open and close the stacker front cover, and then press the lower tray button again after the tray has risen completely.

When the stacker tray is fully lowered, the tray moving indicator stops flashing and remains lit.

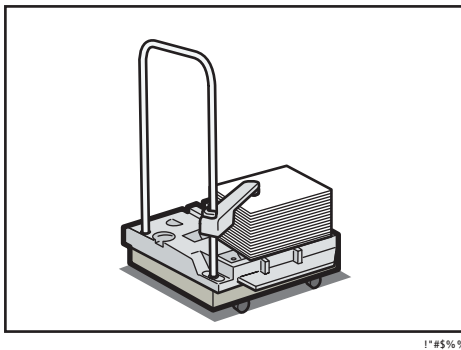
2. Open the stacker front cover.



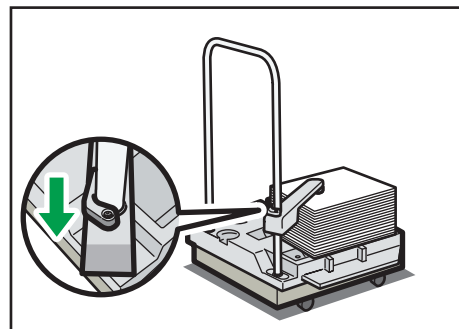
3. Carefully pull out the stacker cart.



4. Rest the paper press on top of the paper stack.

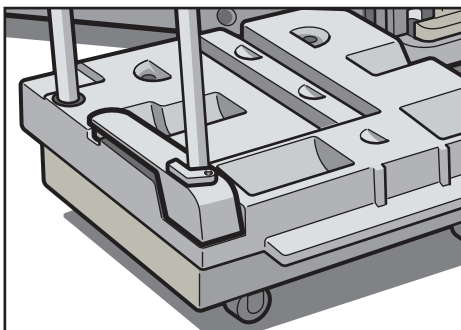


5. Pull the lever on the paper press toward you.



6. Transport the paper to where it is required, and then unload the stacker cart.

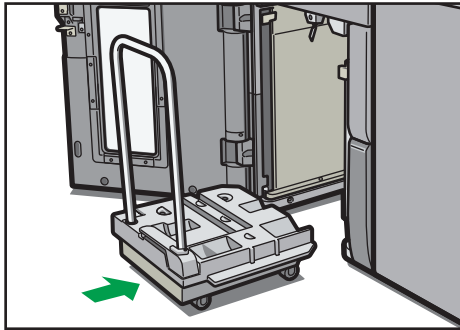
7. Return the paper press to its original position.



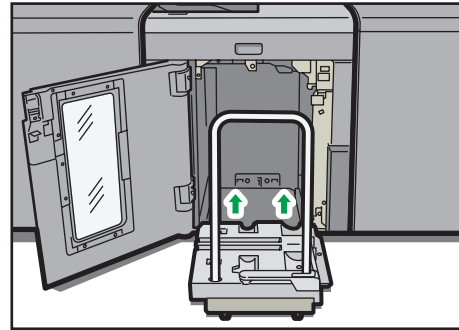
# CIP Training Pro C9200 series

## Output

- Put the stacker cart back inside the high capacity stacker.



Be careful to push the stacker cart in straight, not at an angle.



- Close the stacker front cover.

The stacker tray begins elevating automatically and the tray moving indicator begins flashing. When the tray moving indicator stops flashing, the tray is fully elevated.

### **Note**

- Before moving the high capacity stacker, be sure to take the stacker cart out of the high capacity stacker.









**RICOH**  
imagine. change.