

Digital Colour Production Press

RICOH Pro C7500

✓ Printer

RICOH
imagine. change.



Pro C7500*

95 ppm Mono Full Colour

Pro C7500

85 ppm Mono Full Colour

* With Productivity Upgrade Unit Type S14

A new palette of special effects. A new world of possibilities.

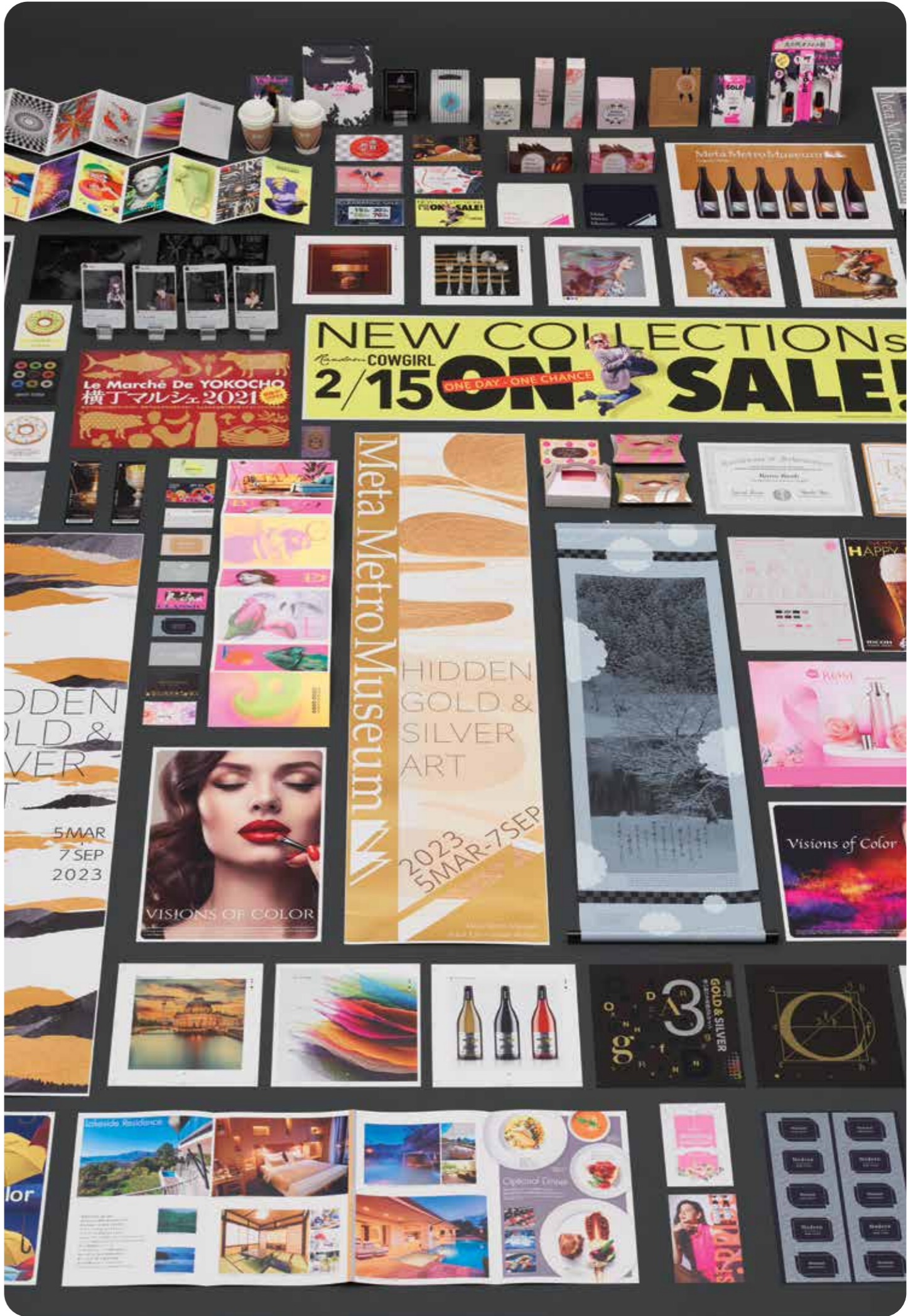
Now your print business can deliver so much more value.

The RICOH Pro C7500 supports up to seven special colours, including gold and silver. Evolved to meet fast-changing client needs, the Pro C7500 can create exciting new opportunities for your business. Enhancing your operational efficiency, the Pro C7500 partners with you in generating new ways to work. To leverage these amazing capabilities, we've also significantly enhanced ease of use.

The RICOH Pro C7500: reinvent your business.



Meet the RICOH Pro C7500



Embrace the extraordinary with the RICOH Pro C7500.

In the realm of transformative business possibilities, moments of true innovation are rare. The RICOH Pro C7500 presents you with the chance to seize that pivotal moment, rise above the ordinary, and propel your business toward unparalleled growth. Our cutting-edge digital press isn't just a colour production printer; it's your gateway to boundless potential.

This adaptable press doesn't merely handle regular four colour work with panache; it embraces the extraordinary. With creativity at its core, it accommodates specialty printing. With the fifth colour option, you can enhance your creations using specialist colours like shimmering silver, opulent gold, and vibrant neons—injecting a surge of impact that transcends the ordinary.

Choose RICOH for unwavering productivity.

In the fast-paced world of commercial printing, time is money. From brochures to banners and packaging, your clients demand rapid, high quality results. The RICOH Pro C7500 is a game changer. Operating at an impressive speed, and transitioning seamlessly between projects, it delivers real world gains. Setup is a breeze, and with its exceptional mixed media handling capabilities, productive performance is assured.

- 2400 x 4800 dpi output is delivered at an impressive 85 ppm.
- Productivity upgrade option increases speed to 95 ppm.
- Graphic Communications Operating System makes setup simple.
- There's no slowing down, full speed is maintained at all media weights.
- And with consumables replenished on the fly, there's no need to stop.

Quality and performance that transcend expectations.

Stunning quality redefines print excellence.

Enhance your clients' marketing materials and packaging with the RICOH Pro C7500. This state of the art digital press consistently delivers print of the highest offset quality. Ricoh's advanced VCSEL imaging technology and PxP toner brings artwork to life in stunning 2400 x 4800 dpi resolution. Harnessing its wide colour gamut to faithfully replicate client palettes, Ricoh's ultra-fine toner produces smoothly rendered, lifelike colours.

- Produce stunning digital print content with an offset look and feel.
- Advanced VCSEL imaging technology delivers best in class resolution.
- Reliable duplex printing with accurate front-to-back registration.
- Low melt toner reduces energy costs and broadens media horizons.
- Vivid lifelike colours, smooth tonal gradation and fine lines.



Streamline with Fiery integration.

Ricoh's new user interface enables Ricoh and Fiery applications to be managed via the same unified command centre. Choose from two powerful Fiery controllers, both driven by Fiery FS500 Pro software for superior performance. Ricoh's Graphic Communications Operating System streamlines setup, enhancing productivity. Effortlessly supervise production with Ricoh's remote browser utility.

- Super-sized touchscreen panel with intuitive operating system.
- Choice of two powerful Fiery FS500 Pro controllers.
- Common interface for Ricoh and Fiery applications.
- Advanced features streamline processes and boost productivity.
- Browser utility enables operators to oversee multiple devices.



Reimagine colours and ignite creativity.

Imagine a new creative reality.

Seize the power to transform and captivate with Ricoh's innovative fifth colour option. Explore new spectra. Introduce silver, gold, neon yellow, neon pink, white, clear, and invisible red. Embrace the freedom to switch colours and incorporate different effects. Imagine pearlescent hues overlaid with a clear varnish, or vibrant neons heightened with a white underlay. It's a glimpse of what's achievable. Explore the limitless possibilities today.

- Our speciality colours add impact and appeal to print.
- Easily switch colours and incorporate different effects.
- Create stunning effects by combining gold and silver with CMYK.
- Expand your colour gamut with vibrant neons.
- Add a white underlay and accentuate designs with a clear varnish.



Enjoy automated colour matching.

Give your business a boost with Ricoh's optional Auto Color Adjuster. Reduce profiling time and raise quality standards. Transforming colour matching, this spectrophotometer enables anyone on your team to achieve precise and repeatable results quickly across different print platforms. The easy to use system automatically compares samples, generating accurate ICC profiles that guarantee consistent, operation-wide colour matching. *(Launching in 2024)*

- Fast and fully automated optional colour matching system.
- Reduce profiling time and raise quality standards.
- Anyone on your team can achieve repeatable results.
- System automatically generates accurate ICC profiles.
- Split jobs across devices and execute multi channel campaigns.



Broaden your media horizons.

Embrace covers, card, inserts, and packaging with the RICOH Pro C7500. Our patented elastic fusing belt and AC transfer technology enables the digital press to print reliably onto a variety of substrates, including gloss and matt-coated offset media, textured card, metallic media, and carbonless paper. Streamlining setup, its cloud-based media library offers automated settings for both branded and unbranded media.

- Expand your media range and reduce job setup times.
- Media library streamlines setup for branded/unbranded media.
- Elastic fusing belt and AC transfer technology extend media capabilities.
- Supports media of 40 to 470 gsm and up to 1,260 mm in length.
- Gloss and matt-coated media, textured card and carbonless paper.



Expand your production capabilities.

Effortlessly create premium products with the RICOH Pro C7500. Tailor the digital press to meet your exacting production needs. Enhance media flexibility by incorporating large capacity trays. Streamline production with an array of in-line finishing solutions, including a multi-folding unit, high capacity stackers, hole punching, creasing, perfining, trimming, and a range of professional booklet making systems.

- Expand your capabilities with powerful in-line finishing solutions.
- Produce high impact landscape booklets with long sheet covers.
- Twin stackers collate production ready for distribution.
- Increase capacity by producing A5 booklets 2-up.



RICOH Pro C7500

SYSTEM SPECIFICATIONS

General

Model Name:	Pro C7500
Technology:	4-drum (standard) / 5-drum (optional) dry electrostatic transfer system with internal transfer belt
Fusing:	Oil-less, belt fusing method
Print Speed:	85 ppm (standard) 95 ppm (with productivity upgrade option)
Print Resolution:	VCSEL 2400 x 4800 dpi
Warm Up Time:	Less than 300 seconds
Dimensions (W x D x H):	1,320 x 910 x 1,816 mm (including Attention Light)
Weight:	Less than 590 kg
Power Source:	220-240V, 25A, 50/60 Hz
Power Consumption:	Less than 4,800W
Unit Life:	14,400,000 A4 prints or 5 years

Media Handling

Paper Input Capacity:	1st Tray (standard) 1,000 sheets x 2 (Tandem) 2nd Tray (standard) 500 sheets Optional: Vacuum Feed LCIT Tray 3: 2,200 sheets Tray 4: 2,200 sheets Tray 5: 2,200 sheets Tray 6: 2,200 sheets Tray 7: 2,200 sheets Tray 8: 2,200 sheets Optional: Bypass Tray 500 sheets
Maximum Printable Area:	323 x 480 mm 323 x 1,252 mm (with optional banner tray)
Paper Weight:	1st Tray (standard) 52.3 - 300 gsm 2nd Tray (standard) 52.3 - 256 gsm Optional: Vacuum Feed LCIT Tray 3: 40 - 470 gsm Tray 4: 40 - 470 gsm Tray 5: 40 - 400 gsm Tray 6: 40 - 400 gsm Tray 7: 40 - 400 gsm Tray 8: 40 - 400 gsm Optional: Bypass Tray 52.3 - 216 gsm
Maximum Media Thickness:	600µm
Duplex:	40 - 470 gsm, up to 1,030 mm

Print Controllers

Fiery Color Controller N-50A

System Version:	Fiery System FS500 Pro
CPU:	Intel i5 8500
Memory:	8 GB (2 x 4 GB)
HDD:	256 GB SSD SATA (OS) 1TB HDD SATA (Data)
Operating System:	Windows 10 IoT Enterprise 2019 LTSC
Supported Data Formats:	Standard: Adobe PostScript Levels 1, 2, 3; Adobe PDF; PDF/X-1a, 3, and 4; Optimised PDF and PS; Enhanced PCL6/PCL5; JPEG; EPS; TIFF (via HotFolders); Microsoft Office document formats: doc, docx, xls, xlsx, ppt, pptx, pps, ppsx, pub (via Hot Folders); Option: IPDS (Hardware & Software).

Fiery Color Controller N-70A

System Version:	Fiery System FS500 Pro
CPU:	Intel Xeon 4214 (Silver)
Memory:	32 GB (4 x 8 GB)
HDD:	480 GB SSD SATA (OS) 2 x 2 TB HDD SATA (Data)
Operating System:	Windows 10 IoT Enterprise 2019 LTSC
Supported Data Formats:	Standard: Adobe PostScript Levels 1, 2, 3; Adobe PDF; PDF/X-1a, 3, and 4; Optimised PDF and PS; Enhanced PCL6/PCL5; JPEG; EPS; TIFF (via HotFolders); Microsoft Office document formats: doc, docx, xls, xlsx, ppt, pptx, pps, ppsx, pub (via Hot Folders); Option: IPDS (Hardware & Software).

Other Options

Productivity Upgrade Unit Type S15, 5th Station Upgrade Unit Type S14, 5th Station Replacement Kit S14, Toner Interchange Unit Type S14, Vacuum Feed LCIT RT5150, Bridge Unit BU5010, Plockmatic LCT XL, BDT VX 370-1280 Feeder, Vacuum Feed Banner Sheet Tray Type S9, Extension Vacuum Feed Banner Sheet Tray Type S14, Multi Bypass Tray BY5020, Multi Bypass Banner Sheet Tray Type S9, Plockmatic LSM XL, Buffer Pass Unit Type S9, Cover Interposer Tray CI5040, High Capacity Interposer HC13500, Multi-Folding Unit FD5030, GBC StreamPunch Plus, High Capacity Stacker SK5040, Finisher SR5110, Booklet Finisher SR5120, Bridge Unit BU5020, Trimmer Unit TR5050, Plockmatic SBT, SR5000 Series Output Tray for Banner Sheet Type S6, Extension Output Banner Sheet Tray Type S14, Plockmatic MPS XL, Plockmatic PBM350e Booklet Maker, Plockmatic PBM5035 Booklet Maker, Plockmatic PBM5035S Booklet Maker

Workflow Solutions

Ricoh TotalFlow Producer, Ricoh TotalFlow Prep and Production Manager, Ricoh ProcessDirector, BatchBuilder, FusionPro VDP Suite, Ricoh Supervisor, Ricoh Auto Color Adjuster, ePS MarketDirect StoreFront and Quick Print Suite, Fiery Colour Profiler Suite, Fiery Graphic Arts Premium Package, Fiery Impose, Fiery Compose, Fiery JobMaster, Fiery JobFlow, Objectif Lune OL Connect Suite, Color-Logic, Touch7.

Note: Unless stated otherwise the data used in this brochure is based on A4 80 gsm standard media.

RICOH
imagine. change.

www.ricoh.com.au

Ricoh Australia

Level 1, 2 Richardson Place
North Ryde NSW 2113

13 RICOH